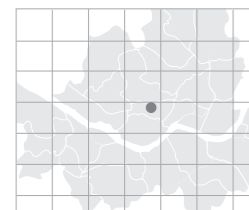


Tourism is a key industry that determines national wealth in the 21 century. Particularly, the hotel industry, considered to represent the tourism industry, makes huge contributions to the national economy by improving the national image and earning foreign currency with quality services. With this sense of responsibility, Royal Hotel Seoul started on March 12, 1971, as a Deluxe Tour Hotel, based on the private capital only for the first time in Korea's tourism history. For the past half century, we have contributed to the development of Korea's tourism industry and local communities, satisfying both domestic and foreign tourists. Its location in Myeongdong at the Center of Seoul earned Royal Hotel Seoul the nickname of 'OASIS in downtown' from the very beginning. Now it is placed as the best resting place among Seoul citizens and domestic and foreign tourists. In the 21st century, Royal Hotel Seoul is putting one step forward with new visions and philosophy to become one of the best hotels by creating and developing desirable hotel culture, and contributing to the country and local communities.

- Hotel Grade: 4 Star
- Total Area(m²): 20,138
- No. of Meeting Rooms: 4
- No. of Guest Rooms: 306
- Year of Establishment: 1971
- From Incheon Int'l Airport: 56min. / 59.352km
- Subway Station: Line #4 Myeong-dong Station



> Map: H-7

61, Myeongdong-gil, Jung-gu, Seoul 04538, Korea

http://www.royal.co.kr
reser@royal.co.kr
Tel: 82-2-756-1112 Fax: 82-2-756-1119

Person in Charge_Sang Yub Lee
Tel: 82-2-2129-5760 Fax: 82-2-2129-5880
lsy407@royal.co.kr



Special Features ① Located in Myeong-dong - an excellent location for sightseeing and shopping ② A free shuttle bus between the hotel and Incheon International Airport

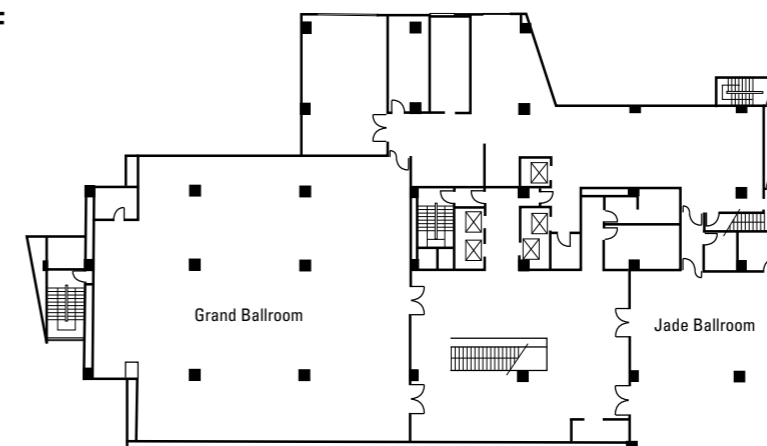
Major Events ★FITI Testing & Research Institute academic event – Jun. 2013 / 100guests ★Korea Institute of Finance academic event – Jun. 2013 / 100guests ★UNESCO Invitation event – Jul. 2013 / 100guests ★International event for Korea Institute for Health and Social Affairs – Nov. 2013 / 50guests ★Korea Institute of Design Promotion academic conference – Dec. 2013 / 100guests ★Korea Trade-Investment Promotion Agency – Apr. 2014 / 100guests ★Launching event for Air Asia – Jun. 2014 / 100guests



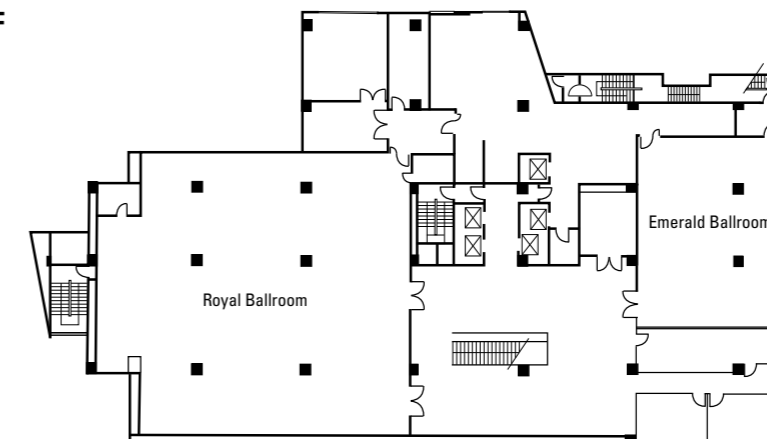
MEETING & BANQUET FACILITIES

Name of Hall	Location	Size (m ²)	Theater	Classroom	Cocktail	Banquet
Grand Ballroom	3F	462	350	220	250	230
Royal Ballroom	2F	462	250	220	250	230
Jade Ballroom	2F	132	80	80	80	70

3F



2F



GUEST ROOMS

Room Type	Rooms
Double Standards	1
Double Deluxe	23
Twin Standards	68
Twin Deluxe	53
Executive Double	51
Executive Twin	44
Premier Twin	28
Triple Family	22
Executive Prince Suite	5
Executive Premier Suite	2
Royal Suite	6
Ondol Prince Suite	1
Ondol Royal Suite	2
Total	306

* Average Rates: KRW 200,000 - 420,000

FOOD & BEVERAGE

Name of Facility	Location	Cuisine	Capacity
Bakery Shop	1F	Bakery	-
Cafe & Dining	1F	Western Style, Breakfast, Brunch, Buffet, Pub	120
Bar	1F	Wine, Beverage	30
Buffet Restaurant	21F	Buffet	230

Nearby Attractions

- **Sightseeing:** Dongdaemun Design Plaza • **Entertainment:** FANTA-STICK, Korea House • **Popular Streets:** Myeong-dong
- **Shopping:** Lotte Department Store (Main Store), Namdaemun Market * Customized services are available in alliance with Seoul City Tour travel agencies